

product specifications



Y18

- SEAMLESS WAVE FRONT
- EXTREMELY HIGH SPL
- FOR USE IN 3- or 4-WAY SYSTEMS
- PRECISE ANGULAR CONTROL



The Adamson Y18 is the original and most powerful enclosure of the Y-Axis series. The Y-Axis series' design was developed to eliminate mid lobe and comb filtering, with far greater control and coverage than any conventional PA system. The Y-Axis boasts far field sonic accuracy that sounds like "near field monitors at 50 meters."

The Y18 is a high power, 3-way line array cabinet employs two Adamson mid/high Co-Linear drive modules (with 2 patents granted and 2 pending applications). The Adamson drive module has a co-axial entrance and a co-linear exit comprised of a high frequency sound chamber mounted within a mid frequency sound chamber. The drive module is powered by a proprietary 9" Kevlar mid and a single 1.5" HF compression driver. Together, the drive module, trapezoidal cabinet design with a wrap around grill - deliver a single, uniform, slightly curved, and seamless wavefront of mid and high frequency sound, with no gaps between cabinets. The Y18 LF section features two Adamson's proprietary AW18 18" Kevlar drivers.

The Y-Axis Series are the only line arrays that create iso-phase sound sources in the high and mid frequency sections. Mid lobe, comb filtering and time-smear are virtually eliminated, giving the Adamson Y-Axis line array unrivaled far field sonic accuracy.

The Y-Axis series allows the end user a completely scalable system solution using 5-degree vertical elements and 100-degree horizontal coverage. The total vertical coverage is determined by the number of cabinets added to the array. Adamson's Slide Hinge rigging gets the Y18 out of the truck and into the air quickly and easily; and with optional underhang kits, the Y18 offers the most comprehensive and versatile approach to system configuration, allowing for a range of Y-Axis and SpekTrix enclosures to be utilized in a single array. The Slide Hinge rigging system features six one-degree increments, allowing precise angular positioning by adjusting the extension of the sliding hinge.

When coupled with the Adamson T-21Sub, the Y18 is the absolute must have for arena and stadium venues, as well as medium to large outdoor festivals.

Light aluminum dollies come standard. Optional waterproof soft covers with customized silkscreening and black powder coated aluminum rigging frames to support 16 or 24 Y10's are available as optional accessories.

Product Code 900049



technical specifications

Y18



FEATURES

- Concerts
- Outdoor Festivals
- Large Theaters
- Large Clubs
- Houses of Worship

ADDITIONAL INFORMATION

Adamson Co-Linear Drive Module
Two Adamson AW 18 - 18" Kevlar LF Drivers
Two Adamson YX9 - 9" Kevlar MF Drivers
Two 1.5" exit JBL 2451 HF Drivers
Aluminum Dolly Board
Proprietary Stainless/Aluminum Slide Hinge Rigging

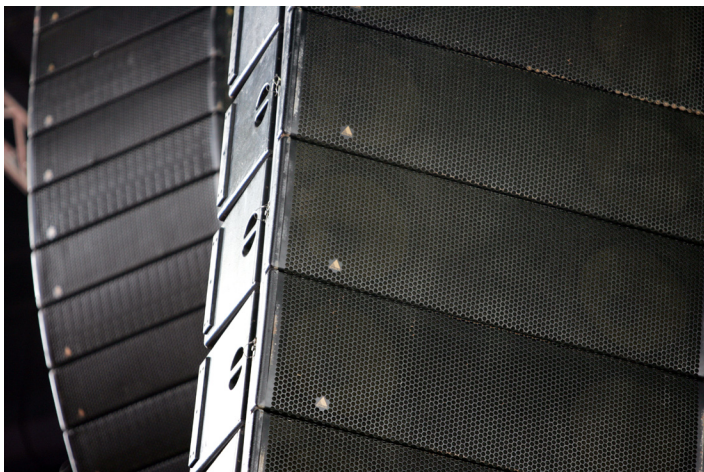
PHYSICAL DATA

Dimensions & Weight

Height (cm)	18.3/8." (46.7 cm)
Width (cm)	57.3/4" (146.6cm)
Depth (cm)	26.5" (62.3cm)
Weight (kg)	270lbs. (122.7kg)
Dolly (kg)	35lbs. (15.9kg)
Finish	Black Waterbased Bake Enamel
Rigging	Stainless/Aluminum Slide Hinge
Cabinet Construction	Rugged 11-ply Baltic Birch
Accessories	Aluminum Dolly
Optional Accessories	Powdercoated Black Aluminum Rigging Frame Waterproof Custom Soft Cover

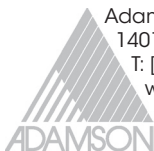
TECHNICAL DATA

Frequency Response (Hz)	
Full Range Preset	40Hz to 18kHz
Xover Preset	70Hz to 18kHz
Maximum SPL (continuous)	
with Preset Xover mode	138.5dB
with Preset Full range	138 dB
Maximum SPL (peak)	
with Preset Xover mode	144.5dB
with Preset Full range	144dB
Sensitivity (2.83v/1m)	
LF	104dB (105dB using 2 units)
MF	110dB (110dB using 2 units)
HF	116dB (116dB using 2 units)
Directivity	
Horizontal	100° @ -6dB / 90° @ -3dB
Vertical	5° (prolate-spheroidal sound chamber)
Vertical	several enclosures - defined by the array
LF x 2	AW18 18" Kevlar Low Frequency Drivers (8Ω)
MF x 2	YX9 9" Kevlar Drivers (8Ω)
HF	2 x JBL 2451 (8Ω)
Power Handling (AES / Program / Peak)	
LF x 2	600 / 1200 / 2400
MF x 2	350 / 700 / 1400
HF x 2	150 / 300 / 600
Connection	Neutrik Speakon™ NL8
Processing	Settings Available for XTA & LAKE



Product Code 900049

Adamson Systems Engineering
1401 Scugog Line 6, Port Perry, ON L9L 1B2
T: [905] 982 0520 F: [905] 982 0609
www.adamsonproaudio.com
sales@adamsonproaudio.com



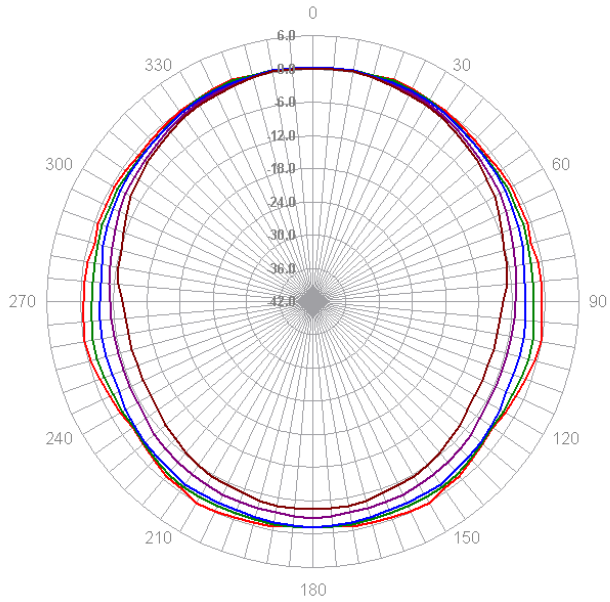
Specifications are subject to change without notice.

technical specifications

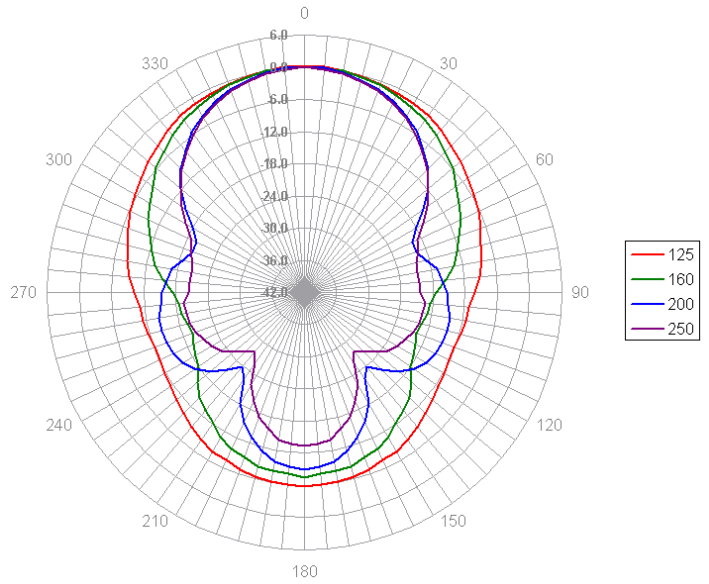
Y18



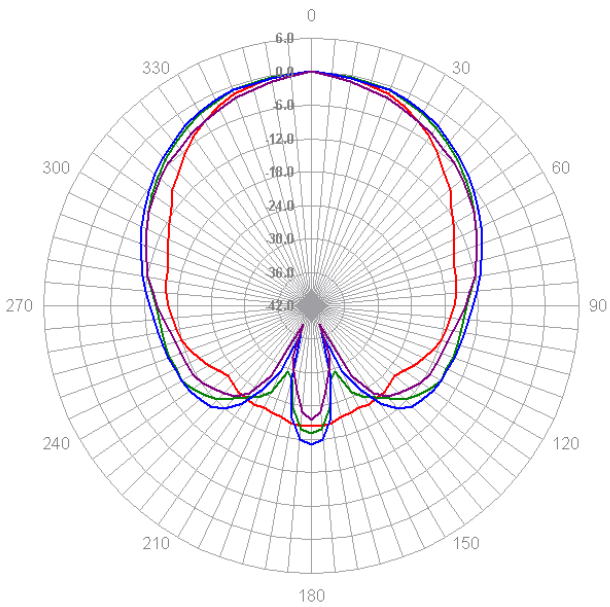
Polar plots 50 - 100 Hz ; 6 dB/div



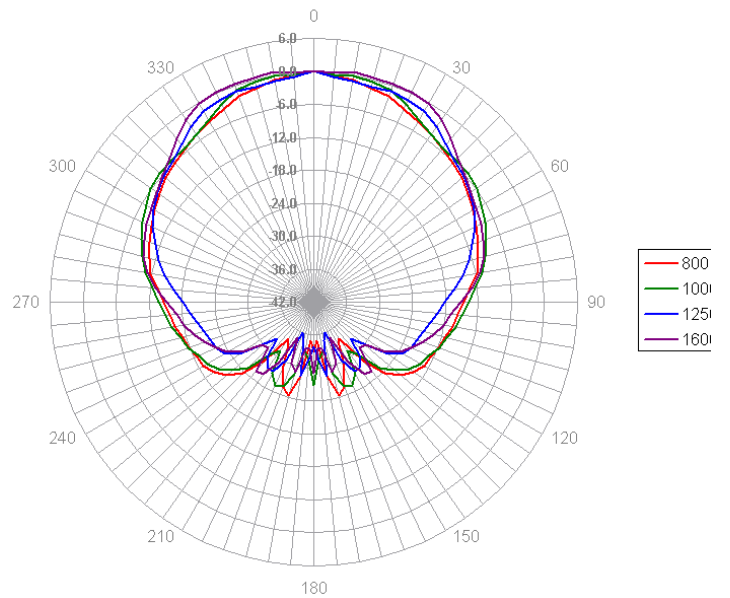
Polar plots 125 - 250 Hz ; 6 dB/div



Polar plots 315 - 630 Hz ; 6 dB/div



Polar plots 800 Hz - 1K6 ; 6 dB/div

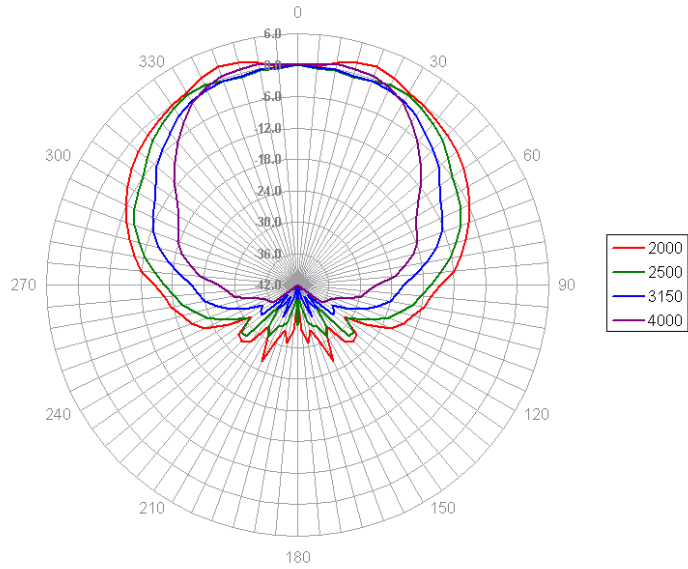


technical specifications

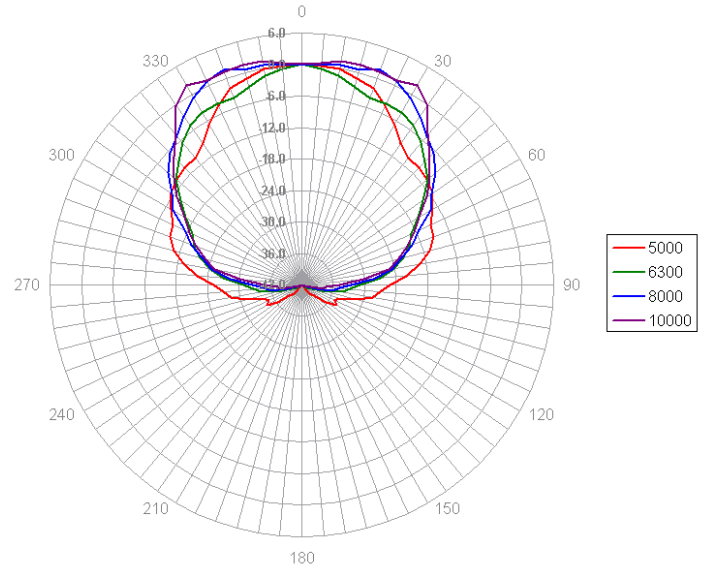
Y18



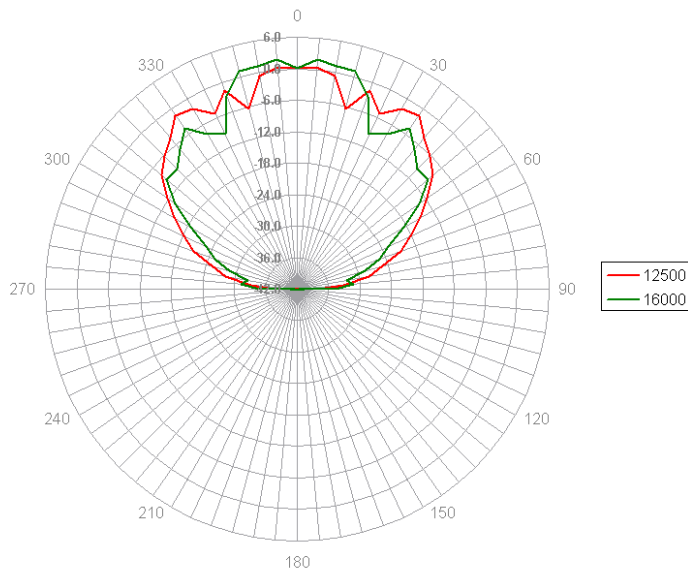
Polar plots 2K - 4K ; 6 dB/div



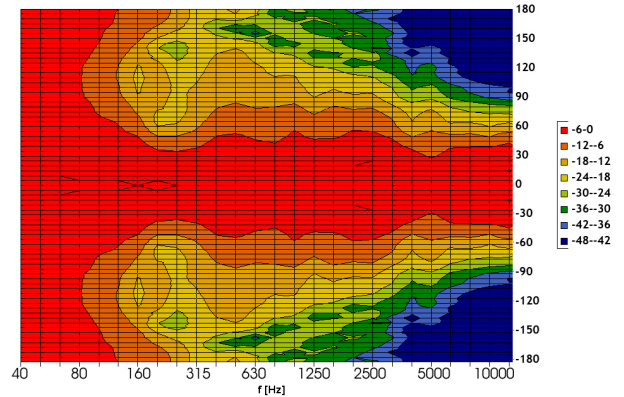
Polar plots 5K - 10K ; 6 dB/div



Polar plots 12K5 - 16K ; 6 dB/div



2D Directivity Plot



-3dB & -6dB Isobar

